

CNC storage and transport systems





CNC modular system

Page 170



CNC tool inserts

Page 172



CNC table mounted frames

Page 174



CNC tool holder carriers

Page 176



New variants

CNC cabinets and workbenches

Page 178



Storage of up to 400 inserts

RotaRex® large cabinet

Page 188

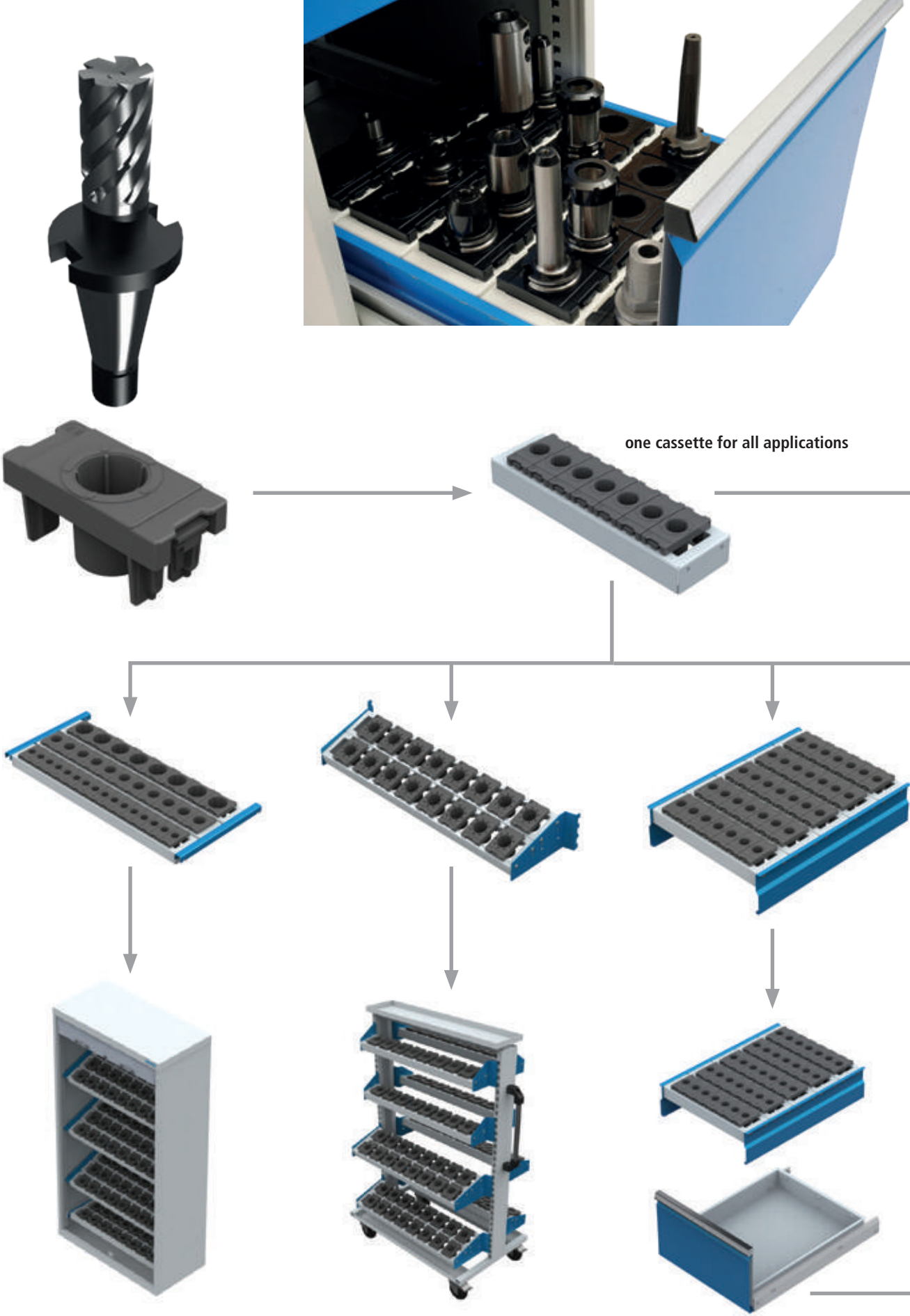


CNC workshop and tool trolley

Page 192

CNC storage and transport systems

The modular system



CNC
E1

Tool insert size 1
Tool insert 49 x 103 x 17 mm



Ergonomics
Efficiency through occupational safety during the activity to be carried out



Mobile
Fast, flexible work process thanks to maximum mobility

CNC
E2

Tool insert size 2
Tool insert 74 x 103 x 17 mm



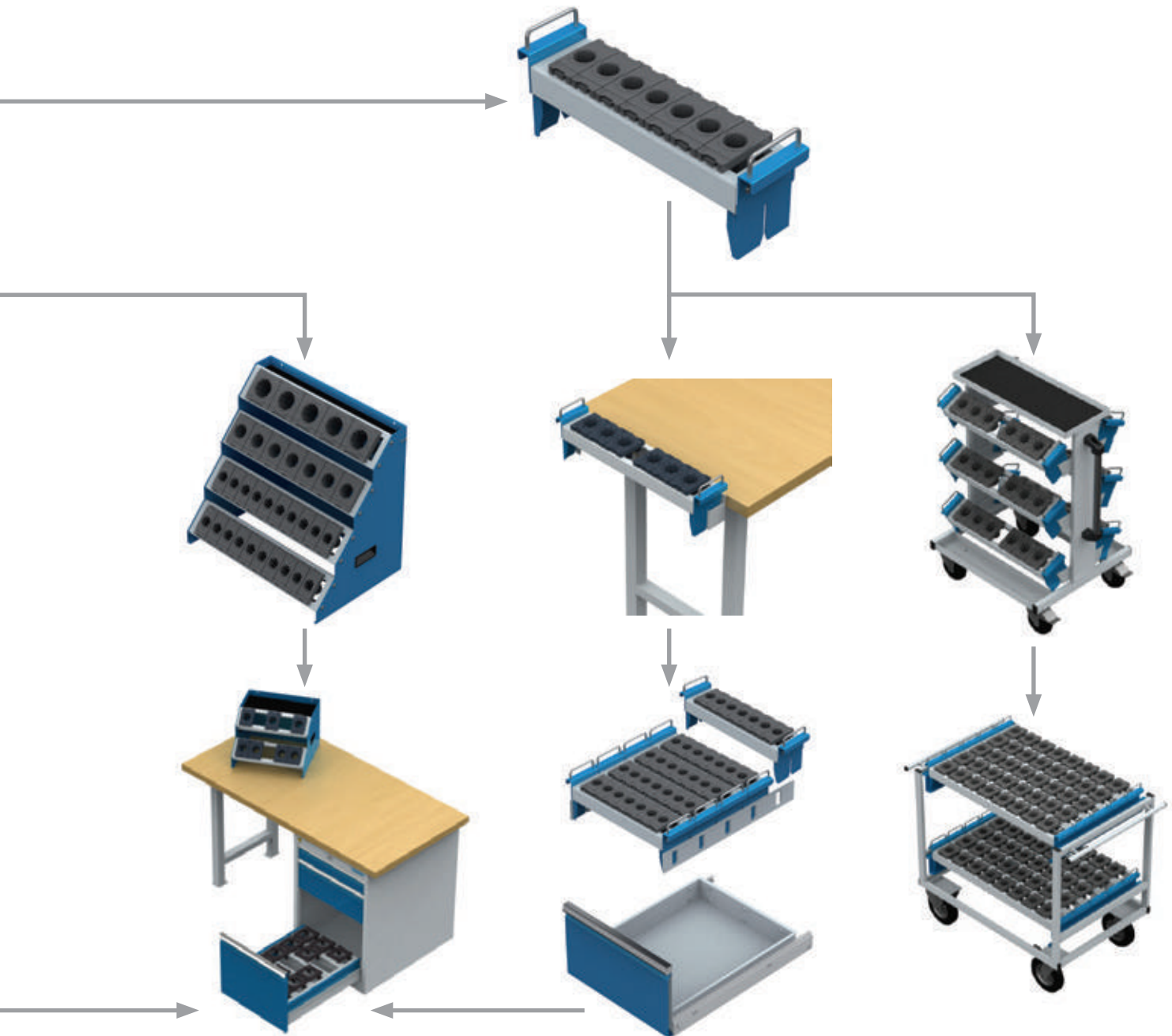
Optimisation of the space within reach
Optimal range of movement with short receptacle paths and an unrestricted assembly area



Information
on relevant articles/product groups are shown

CNC
E3

Tool insert size 3
Tool insert 99 x 103 x 17 mm



CNC tool inserts

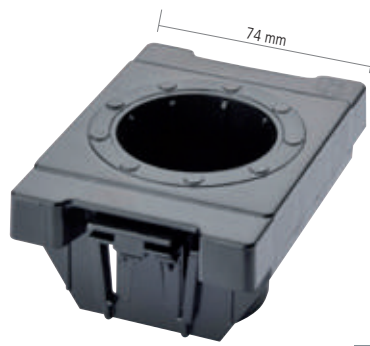
The tool inserts are made of oil-resistant, break-proof and impact-resistant ABS plastic and are noted for their tailored inner struts. The tapered tool holder is thus optimally centred.

- The insert is clicked into our grid system with a clip and can be moved in steps of 25 mm without a tool.
- Nubs on the top of the inserts. In this way, no adhesion occurs and the tool is prevented from attaching itself by vacuum
- All tool sizes can be combined



CNC
E1

Item no.	Type
56.01.30	SK 30
56.02.25	VDI 25
56.02.30	VDI 30
56.03.30	MK 3
56.03.40	MK 4



CNC
E2

Item no.	Type
56.01.40	SK 40
56.02.40	VDI 40
57.01.50	HSK A 50/B 63
57.01.63	HSK A 63/B 80
56.03.50	MK 5



CNC
E3

Item no.	Type
56.01.50	SK 50
56.02.50	VDI 50
56.02.60	VDI 60
57.01.80	HSK A 80/B 100
57.01.100	HSK A 100/B 125



CNC
E3

Item no.	Type
57.01.40	HSK A 40/B 50



CNC
E3

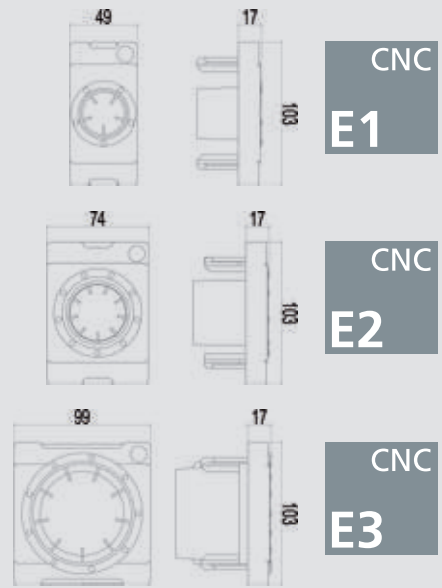
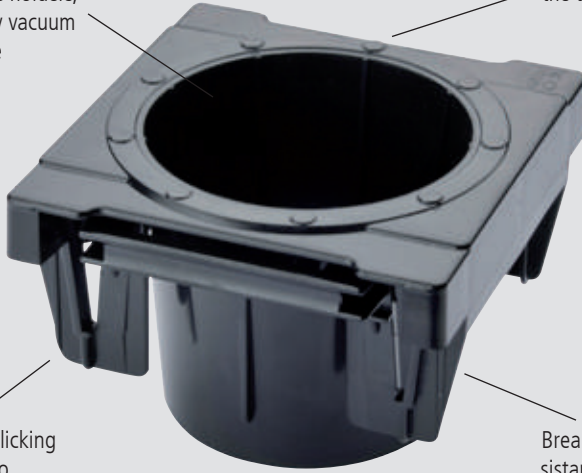
Item no.	Type
57.01.32	HSK A 32/B 40

Inner struts protect and centre the holders, attachment by vacuum is not possible

Nubs at the top prevent the tool from attaching itself by vacuum

Clip for easy clicking into place – no screwing down

Break-proof, impact-resistant and oil-resistant thanks to ABS material



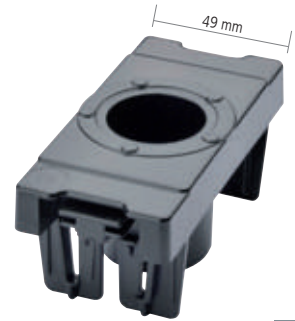
CNC
E3

Item no.	Type
57.01.00	Universal



CNC
E3

Item no.	Type
57.01.03	Capto C 3



CNC
E1

Item no.	Type
57.01.04	Capto C 4



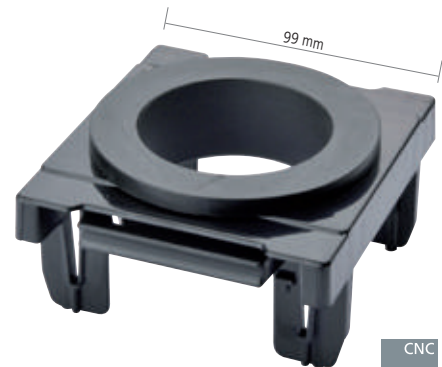
CNC
E2

Item no.	Type
57.01.05	Capto C 5



CNC
E3

Item no.	Type
57.01.06	Capto C 6



CNC
E3

Item no.	Type
57.01.08	Capto C 8

CNC table mounted frames

CNC table mounted frames (TAG)

- Shelf and handles
- CNC table mounted frames are riveted
- **Supplied without tools and inserts**
- *Number of possible inserts for sizes E1, E2, E3



CNC table mounted frame TAG 2-1

- 2x cassette

Item no.	Dimensions in mm (WxDxH)	CNC E1	CNC E2	CNC E3
02.8705.200	425 x 375 x 300	14*	10*	6*

CNC table mounted frame TAG 2-2

- 2x cassette

Item no.	Dimensions in mm (WxDxH)	CNC E1	CNC E2	CNC E3
02.8707.200	575 x 375 x 300	20*	14*	10*



CNC table mounted frame TAG 4-1

- 4x cassette

Item no.	Dimensions in mm (WxDxH)	CNC E1	CNC E2	CNC E3
02.8705.400	425 x 375 x 525	28*	20*	12*

CNC table mounted frame TAG 4-2

- 4x cassette

Item no.	Dimensions in mm (WxDxH)	CNC E1	CNC E2	CNC E3
02.8707.400	575 x 375 x 525	40*	28*	20*

- Suitable for 450/600/900 x 600 mm drawers
- CNC drawer frames are riveted
- **Supplied without tools and inserts**
- *Number of possible inserts for sizes E1, E2, E3



CNC drawer frame SR 450 for cabinet R 18-24

Item no.	Dimensions in mm (WxDxH)	CNC E1	CNC E2	CNC E3
02.8705.500	450 x 600 x 130	35*	25*	15*



CNC drawer frame SR 600 for cabinet R 24-24

Item no.	Dimensions in mm (WxDxH)	CNC E1	CNC E2	CNC E3
02.8707.500	600 x 600 x 130	50*	35*	25*



CNC drawer frame SR 900 for cabinet R 36-24

Item no.	Dimensions in mm (WxDxH)	CNC E1	CNC E2	CNC E3
02.8710.500	900 x 600 x 130	80*	55*	40*

CNC tool holder carriers

CNC tool holder carrier (WAT)

- Our modular system offers you a great variety of possibilities
- The cassette is riveted and fitted with grab handles/carry handles
- **Supplied without tools and inserts**
- *Number of possible inserts for sizes E1, E2, E3



CNC tool holder carrier (WAT), 450 for cabinet R 18-24

Item no.	Dimensions in mm (WxDxH)	CNC E1	CNC E2	CNC E3
02.8705.100	470 x 120 x 180	7*	5*	3*



CNC tool holder carrier (WAT), 600 for cabinet R 24-24

Item no.	Dimensions in mm (WxDxH)	CNC E1	CNC E2	CNC E3
02.8707.100	620 x 120 x 180	10*	7*	5*



CNC tool holder carrier (WAT), 800

Item no.	Dimensions in mm (WxDxH)	CNC E1	CNC E2	CNC E3
02.8708.100	820 x 120 x 180	14*	9*	7*



CNC tool holder carrier (WAT), 900 for cabinet R 36-24

Item no.	Dimensions in mm (WxDxH)	CNC E1	CNC E2	CNC E3
02.8710.100	920 x 120 x 180	16*	11*	8*

CNC cabinets and workbenches

CNC combinations from practice R 18-24 | R 24-24

- The CNC drawers of a front height of more than 300 mm are prepared to hold the tool carriers
- 5 tool carriers or 1 drawer frame can be set per drawer
- Tool holder carriers (WAT), drawer frames (SR) and inserts can be found on page 172/173, 175/176
- Lockable with cylinder lock
- Cabinet can be arranged with other drawer front heights
- **Supplied without tools and tool holder frames**

CNC Drawer cabinet R 24-24

- 4x drawer
- Drawers with full pull-out 100 %
- Drawers with 100 mm front height, load capacity 100 kg
- Drawers with 300 and 400 mm front height, load capacity 180 kg
- Usable drawer dimension, internal: 600 x 600 mm

Item no.	Dimensions in mm (WxDxH)
02.140V	705 x 736 x 1019



Note:
Suspension rails on
page 177



CNC inline workbench

- Beech multiplex top 40 mm (H)
- Drawers with full pull-out (FP) 100%
- Drawers with 50 mm front height, load capacity 70 kg
- Drawers with 100, 150, 200 mm front height, load capacity 100 kg
- Drawers with 400 mm front height, load capacity 180 kg
- **Supplied without tool holder carriers (WAT) and drawer frames (SR)**

Item no.	Dimensions in mm (WxDxH)	Designation
580.0111V86	555 x 736 x 819	Left: CNC drawer cabinet R 18-24, 3x drawer Usable drawer dimension, internal: 450 x 600 mm
780.1111V86	705 x 736 x 819	Right: CNC drawer cabinet R 24-24, 4x drawer Usable drawer dimension, internal: 600 x 600 mm
03.15.40	1500 x 750 x 40	Beech multiplex workbench top
03.20.40	2000 x 750 x 40	Beech multiplex workbench top

CNC inline workbench

- Beech multiplex top 1500 x 750 x 40 mm (WxDxH)
- Workbench stand
- Drawer cabinet R 18-24
- 3x drawer
- Drawers with full pull-out 100 %
- Drawers with 100 and 200 mm front height, load capacity 100 kg
- Drawers with 400 mm front height, load capacity 180 kg
- Usable drawer dimension, internal: 450 x 600 mm
- **Supplied without tools, inserts and table mounted frame**

Item no.	Dimensions in mm (WxDxH)
02.580V86	1500 x 750 x 859



Note:
CNC accessories
from page 172



CNC box workbench

- Beech multiplex top, 2000 x 750 x 40 mm (WxDxH)
- Drawer cabinets R 24-24
- 7x drawer
- Drawers with full pull-out (FP) 100%
- Drawers with 50 mm front height, load capacity 70 kg
- Drawers with 100 mm front height, load capacity 100 kg
- Drawers with 400 mm front height, load capacity 180 kg
- Usable drawer dimension, internal: 600 x 600 mm
- 2x shelf 500 x 730 x 300 mm (WxDxH)
- incl. levelling feet
- 1000 kg total load capacity
- **Supplied without tools, inserts, drawer frames and tool holder carriers**

Item no.	Dimensions in mm (WxDxH)	Designation
03.20.34V86	2000 x 750 x 859	Left: 3x drawer, usable drawer dimension, internal: 600 x 600 mm Central: 2x shelf, 500 mm Right: 4x drawer, usable drawer dimension, internal: 600 x 600 mm
03.20.34V96	2000 x 750 x 959	Left: 3x drawer, usable drawer dimension, internal: 600 x 600 mm Central: 2x shelf, 500 mm Right: 4x drawer, usable drawer dimension, internal: 600 x 600 mm

CNC cabinets and workbenches

CNC workstation – We offer you the right solution R 18-24 | R 24-24

- Drawers with full pull-out (FP) 100%
- Drawers with 50 mm front height, load capacity 70 kg
Drawers with 100, 150, 200 mm front height, load capacity 100 kg
Drawers with 400 mm front height, load capacity 180 kg
- **Supplied without tools, inserts and decoration**



Aluminium mounting block
see page 177

Pos.	Item no.	Dimensions in mm (WxDxH)	Description
1	580.0111V86	555 x 736 x 819	CNC drawer cabinet R 18-24 Usable drawer dimension, internal: 450 x 600 mm
2	780.1111V86	705 x 736 x 819	CNC drawer cabinet R 24-24 Usable drawer dimension, internal: 600 x 600 mm
w/ofg.	02.8707.500	600 x 600 x 130	CNC drawer frame SR 600, 600 x 600 x 130 mm (see page 175)
3	03.20.40	2000 x 750 x 40	Beech multiplex workbench top 40 mm
4.1	03.935.125.240	1250	Support column left
4.2	03.935.125.140	1250	Support column right
5	03.983.102	1000 x 20 x 302	Perforated wall for hanging between the support columns
6	02.910.02	942 x 263 x 134	CNC tool holding shelf with 2 x cassettes for hanging between the support columns
7	02.910.01	942 x 147 x 134	CNC tool holding shelf with 1 x cassettes for hanging between the support columns
8	02.89.WAT.01	70 x 75 x 88	Bracket for attaching the CNC carriers to the workbench top
9	02.8707.100	620 x 120 x 180	CNC tool holder carrier for R 24-24
10	02.8705.400	425 x 375 x 525	CNC table mounted frame TAG 4-1
11	05.96.01	–	Work chair with casters, seat and backrest of black PU, safety gas spring, plastic cruciform base, seat and backrest inclination, height 465 - 655 mm

NEW



Mobile CNC workbench R 18-24

- Beech multiplex top, 1250 x 750 x 40 mm (WxDxH)
- 7x drawer
- Drawers with full pull-out (FP) 100 %, load capacity 100 kg per drawer
- Drawer with 400 mm front height, load capacity 180 kg per drawer
- Usable drawer dimension, internal: 450 x 600 mm
- Drawer guides on ball-bearings, individual pull-out lock
- Round tube push handle
- 2x fixed and 2x steering caster Ø 200 mm, of which 2 with locks
- *Number of possible inserts for sizes E1, E2, E3

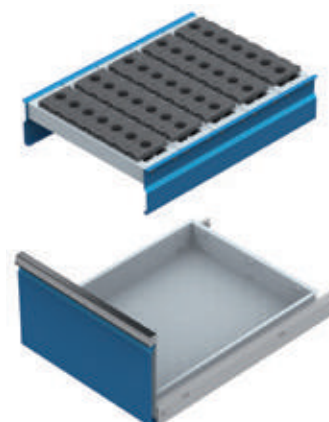
Item no.	Dimensions in mm (WxDxH)
04.12.26V	1250 x 750 x 995



Mobile CNC workbench R 18-24

- Beech multiplex top, 1250 x 750 x 40 mm (WxDxH)
- 4x drawer, 1x door
- Drawers with full pull-out (FP) 100 %, load capacity 100 kg per drawer
- Drawer with 400 mm front height, load capacity 180 kg per drawer
- Usable drawer dimension, internal: 450 x 600 mm
- Drawer guides on ball-bearings, individual pull-out lock
- Round tube push handle
- 2x fixed and 2x steering caster Ø 200 mm, of which 2 with locks
- Space for 5x CNC tool holder carrier (WAT), 500
- *Number of possible inserts for sizes E1, E2, E3

Item no.	Dimensions in mm (WxDxH)
04.12.27V	1250 x 750 x 995



CNC drawer frame SR 450 for the 400 mm drawer

Item no.	Dimensions in mm (WxDxH)	CNC E1	CNC E2	CNC E3
02.8705.500	450 x 600 x 130	35*	25*	15*

Mounting brackets for 1 CNC tool holder carrier (WAT)

- Supplied in pairs



Item no.	Dimensions in mm (WxDxH)
02.89.WAT.01	70 x 75 x 88

Suspension rail for up to 5 x CNC tool holder carriers (WAT)

- Supplied in pairs



Item no.	Dimensions in mm (WxDxH)
02.33.87.60	25 x 600 x 75

CNC tool holder carrier (WAT), 450



Item no.	Dimensions in mm (WxDxH)	CNC E1	CNC E2	CNC E3
02.8705.100	470 x 120 x 180	7*	5*	3*

CNC cabinets and workbenches

CNC combination system R 36-24

- With CNC tool holder frames (WAR) and tool holder carriers (WAT)
- Drawers with full pull-out 100 %
- Drawers with 50 mm front height, load capacity 70 kg
- Drawers with 100 and 150 mm front height, load capacity 100 kg
- Drawers with 400 mm front height, load capacity 180 kg
- **Supplied without tools and inserts**
- *Number of possible inserts for sizes E1, E2, E3



Shelf bracket for roller shutter cabinet and CNC-frame

- 1 piece

CNC roller shutter attachment cabinet (empty)

- Cabinet with plastic roller shutters
- With push cylinder lock

Item no.	Dimensions in mm (WxDxH)
02.98.00	1000 x 500 x 1000

Art.-Nr.
01-00206

1

CNC tool holder frame (WAR) for roller shutter cabinet

- Can be installed straight or inclined
- Load capacity 120 kg

Item no.	Dimensions in mm (WxDxH)
02.89WARG900	950 x 425 x 85

	CNC E1	CNC E2	CNC E3
Maximum insert capacity per carrier	48*	33*	24*

2

CNC tool holder frame (WAR) for roller shutter cabinet, pull-out

- For roller shutter cabinet
- Full pull-out 100 %
- Load capacity 50 kg

Item no.	Dimensions in mm (WxDxH)
02.095.03 VA	950 x 420 x 68

	CNC E1	CNC E2	CNC E3
Maximum insert capacity per carrier	48*	33*	24*

3

CNC drawer cabinet R 36-24

- With cylinder lock
- Usable drawer area, internal: 900 x 600 mm
- 4x drawer

Item no.	Dimensions in mm (WxDxH)
02.1080.4V	1005 x 736 x 819



400

CNC drawer frames or single carriers see page 175/176
CNC inserts see page 172/173

- Housing made of sturdy, welded sheet steel
- The possible number of tool frames is based on the tool height and mounting (straight or inclined)
 - Maximum capacity of the **straight** frame: 5
 - Maximum capacity of the **inclined** frame: 4
- *Number of possible inserts for sizes E1, E2, E3

CNC roller shutter cabinet with plastic roller shutters (empty)

- Plastic roller shutters with push cylinder lock

Item no.	Dimensions in mm (WxDxH)
02.95.01	1000 x 500 x 1950

CNC roller shutter cabinet with aluminium roller shutters (empty)

- High-quality aluminium roller shutters with push cylinder lock

Item no.	Dimensions in mm (WxDxH)
02.89.01	1000 x 500 x 1950

1

CNC tool holder frame (WAR)

- Can be installed straight or inclined
- Load capacity 120 kg

Item no.	Dimensions in mm (WxDxH)
02.89WARG900	950 x 425 x 85

	CNC E1	CNC E2	CNC E3
Maximum insert capacity per carrier	48*	33*	24*

2

CNC tool holder frame (WAR) for roller shutter cabinet, pull-out

- For roller shutter cabinet
- Full pull-out 100 %
- Load capacity 50 kg

Item no.	Dimensions in mm (WxDxH)
02.095.03 VA	950 x 420 x 68

	CNC E1	CNC E2	CNC E3
Maximum insert capacity per carrier	48*	33*	24*

3

Shelf for CNC roller shutter cabinet

- Load capacity 100 kg

Item no.	Dimensions in mm (WxDxH)
04.122	950 x 420 x 28

4

Drawer for CNC roller shutter cabinet

- 100 mm front height, full pull-out 100 %
- Load capacity 50 kg
- Usable drawer dimension, internal: 899 x 375 (W x D)

Item no.	Dimensions in mm (WxD)
60.095.100VA	950 x 430

CNC roller shutter cabinet with plastic roller shutters (as shown)

- 2x CNC tool holder frame (WAR), straight/inclined
- 1x CNC tool holder frame (WAR), pull-out
- 1x shelf
- 1x drawer
- **Supplied without tools and inserts**

Item no.	Dimensions in mm (WxDxH)
02.95.01.01	1000 x 500 x 1950



CNC cabinets and workbenches

CNC hinged door cabinet with solid sheet doors R 36-16

- Robust, welded sheet steel construction
- Resistant powder coating
- Drawers with full pull-out 100 %
- Solid sheet doors with moulded recess cylinder lock
- When using drawers and pull-outs, the opening angle must be 130°



CNC hinged door cabinet R 36-16

- 1x fixed, inclined tool holder frame (WAR)
- 1x pull-out tool holder frame (WAR)
- 1x shelf
- 3x drawer
- **Supplied without tools and inserts**

Item no.	Dimensions in mm (WxDxH)	Product name	Description
02.118.05.01	980 x 500 x 1838	Hinged door cabinet R 36-16	1x fixed and 1x pull-out tool holder frame (WAR), 1x shelf, without tools and inserts, 3x drawer (100, 150, 200 mm)
02.89WAR900	924 x 425 x 87	CNC tool holder frame (WAR), straight/inclined	Suitable for all hinged door cabinets, can be used straight/inclined, load capacity 80 kg
02.89WARA900	926 x 450 x 60	CNC tool holder frame (WAR), pull-out, for hinged door cabinet	Pull-out 100 %, load capacity 50 kg
04.090.013	925 x 443 x 22	Shelf for hinged door cabinet	Fixed shelf, height-adjustable, load capacity 80 kg
60.098.100VA	900 x 400 x 90	Drawer for hinged door cabinet Front height 100 mm, load capacity 50 kg	Drawer suitable for all hinged door cabinets, pull-out 100 %, internal usable dimension: 900 x 400 mm
60.098.150VA	900 x 400 x 140	Drawer for hinged door cabinet Front height 150 mm, load capacity 50 kg	Drawer suitable for all hinged door cabinets, pull-out 100 %, internal usable dimension: 900 x 400 mm
60.098.200VA	900 x 400 x 190	Drawer for hinged door cabinet Front height 200 mm, load capacity 50 kg	Drawer suitable for all hinged door cabinets, pull-out 100 %, internal usable dimension: 900 x 400 mm

CNC cabinets and workbenches

CNC hinged door cabinet R 36-16

- When using drawers and pull-outs, the opening angle must be 130°



CNC hinged door cabinet (empty) R 36-16

- Hinged door cabinet with solid sheet doors
- With moulded recess cylinder lock

Item no.	Dimensions in mm (WxDxH)	Usable height in mm
04.109	980 x 500 x 1019	900
04.118	980 x 500 x 1838	1719



CNC hinged door cabinet with glazed doors (empty) R 36-16

- Hinged door cabinet with glazed doors (acrylic glass)
- With moulded recess cylinder lock

Item no.	Dimensions in mm (WxDxH)	Usable height in mm
04.117	980 x 500 x 1838	1719

CNC RotaRex® large cabinet

CNC-RotaRex®

Your advantages

- Barrier-free access to the cabinet - no impairment by pull-outs
- Space-saving - high quantity of inserts with minimal storage area, up to 400x SK30 or up to 300x SK40 tools fit in 1m²
- Optimised work process as all tools are quickly within reach
- Opening/usable height: 1790 mm
- Forklift base for transport
Warning! RotaRex® must not be transported when loaded!

Roller shutters

- The electrically driven roller shutter is operated by remote control
- Alternatively possible with spring-loaded shaft or hinged doors
- Multiple cabinets can be opened simultaneously with one remote control (on request)
- Aluminium-coloured plastic slats
- In case of a power failure or technical defect, emergency unlocking is provided on the rear of the cabinet

Column

- Precision steel tube, Ø 60 mm
- Galvanized
- Total load 1.5 t
- For holding up to 5 CNC rotating frames
Individually adjustable on a grid of 25 mm
- Individual readjustment of the column position thanks to a tongue on the bottom



CNC-RotaRex® with electric roller shutters

- With remote control
- Without CNC rotating frame

Item no.	Dimensions in mm (WxDxH)
02.1000.1	1055 x 1035 x 2130



CNC-RotaRex® with manual roller shutters

- Without CNC rotating frame

Item no.	Dimensions in mm (WxDxH)
02.1000.2	1055 x 1035 x 2130



CNC-RotaRex® with hinged doors

- Glazed doors with acrylic glass
- Without CNC rotating frame

Item no.	Dimensions in mm (WxDxH)
02.1000.3	1055 x 1035 x 1955

CNC rotating frame

- Dimensions (Ø): 915 mm
- Customer-specific height adjustment thanks to a grid of 25 mm in the column
- Up to 5 x CNC rotating frame fit in the RotaRex®, depending on the tool height
- All frames can be individually rotated 360°
- Maximum load of up to 300 kg per frame
- With handles for optimum access to each tool
- Locking at 90°, 180°, 270°, and 360°
- Smooth rolling with steel ball bearing guides



CNC rotating frame

- With handles and locking mechanism
- 16 lines for Tool inserts
- Supplied without inserts

Item no.	Dimensions in mm (Ø)
02.R01	915



Tool insert size 1

- Tool insert 49 x 103 x 17 mm
- CNC rotating frame completely equipped with the inserts listed below

CNC
E1

Item no.	Type	Number of inserts	Number of tools
02.R560130	SK 30	80	80
02.R570104	Capto C4	80	80
02.R560330	MK 3	80	80
02.R560340	MK 4	80	80
02.R560225	VDI 25	80	80
02.R560230	VDI 30	80	80



Tool insert size 2

- Tool insert 74 x 103 x 17 mm
- CNC rotating frame completely equipped with the inserts listed below

CNC
E2

Item no.	Type	Number of inserts	Number of tools
02.R570150	HSK A 50/B 63	60	60
02.R570163	HSK A 63/B 80	60	60
02.R560140	SK 40	60	60
02.R570405	Capto C5	60	60
02.R560240	VDI 40	60	60
02.R560350	MK5	60	60



Tool insert size 3

- Tool insert 99 x 103 x 17 mm
- CNC rotating frame completely equipped with the inserts listed below

CNC
E3

Item no.	Type	Number of inserts	Number of tools
02.R570132	HSK A 32/B 40	32	96
02.R570140	HSK A 40/B 50	32	64
02.R570180	HSK A 80/B 100	32	32
02.R5701100	HSK A 100/B 125	32	32
02.R560150	SK 50	32	32
02.R570103	Capto C3	32	96
02.R570106	Capto C6	32	32
02.R570108	Capto C8	32	32
02.R560250	VDI 50	32	32
02.R570100	Universal	32	32

CNC workshop and transport trolleys

CNC workshop trolley R 18-24 | R 24-24

The optimum storage and safe transport of CNC tools significantly influence economic efficiency.

- Inserts see page 172/173
- **Suspension rails 02.33.87.60 are required when using the single carrier (WAT).**
- **Supplied without tools and inserts**

CNC workshop trolley R18-24

- Raised edges and ribbed rubber mat
- 5x drawer
- Usable drawer dimension, internal: 450 x 600 mm
- Drawers with full pull-out 100 %
- Drawers with 50 mm front height, load capacity 70 kg
Drawers with 100 mm front height, load capacity 100 kg
Drawers with 400 mm front height, load capacity 180 kg
- With individual interlocking
- 2 fixed and 2 steering casters, Ø 125 mm with locks
- Max. load capacity 500 kg



Item no.	Dimensions in mm (WxDxH)	Designation
02.580.05V	555 x 736 x 991	CNC workshop trolley with 5x drawer and raised edges
02.8705.100	470 x 120 x 180	CNC tool holder carrier (WAT), 5x single carrier per drawer possible
02.33.87.60	600 x 25 x 75	Suspension rail for CNC for tool holder carrier (WAT)
02.8705.500	450 x 600 x 130	CNC drawer frame SR 450, without tool inserts

CNC workshop trolley R24-24

- Raised edges and ribbed rubber mat
- 4x drawer
- Usable drawer dimension, internal: 600 x 600 mm
- Drawers with full pull-out 100 %
- Drawers with 50 mm front height, load capacity 70 kg
Drawers with 100 mm front height, load capacity 100 kg
Drawers with 400 mm front height, load capacity 180 kg
- With individual interlocking
- 2 fixed and 2 steering casters, Ø 125 mm with locks
- Max. load capacity 500 kg



Item no.	Dimensions in mm (WxDxH)	Designation
02.780.04V	705 x 736 x 991	CNC workshop trolley with 4 drawer and raised edges
02.8707.100	620 x 120 x 180	CNC tool holder carrier (WAT), 5x single carrier per drawer possible
02.33.87.60	600 x 25 x 75	Suspension rail for CNC for tool holder carrier (WAT)
02.8707.500	600 x 600 x 130	CNC drawer frame SR 600, without tool inserts

CNC workshop and transport trolleys

CNC transport trolley

- Optimum storage and safe transport
- **Supplied without tools and inserts**
- *Number of possible inserts for sizes E1, E2, E3 see page 172/173



CNC trolley (empty) for max. 8 CNC carriers 02.8707.100

- 2x fixed and 2x steering caster, Ø 125 mm with locks
- Max. capacity of CNC inserts with 8x carrier (see table)
- Max. load capacity 400 kg

Item no.	CNC E1	CNC E2	CNC E3
02.8707.100	10*	7*	5*

Item no.	Dimensions in mm (WxDxH)	CNC E1	CNC E2	CNC E3
02.88.00	630 x 900 x 860	80*	56*	40*



CNC trolley with 1 level (empty) for CNC tools

- 2x fixed and 2x steering caster, Ø 200 mm with locks
- 1x tool frame, top
- 1x shelf, bottom
- Max. capacity of CNC inserts see table
- Max. load capacity 400 kg

Item no.	Dimensions in mm (WxDxH)	CNC E1	CNC E2	CNC E3
02.092.02	950 x 665 x 950	80*	55*	40*



CNC trolley with 2 levels (empty) for CNC tools

- 2x fixed and 2x steering caster, Ø 200 mm with locks
- 2x tool frame
- Max. capacity of CNC inserts see table
- Max. load capacity 400 kg

Item no.	Dimensions in mm (WxDxH)	CNC E1	CNC E2	CNC E3
02.092.01	950 x 665 x 950	160*	110*	80*

- 2x fixed and 2x steering caster, Ø 125 mm with locks
- Ergonomic handle, enabling the multi-trolleys to move extremely smoothly and be used anywhere
- Individual arrangements possible
- Max. load capacity 400 kg
- *Number of possible inserts for sizes E1, E2, E3 see page 172/173



Pos.	Item no.	Dimensions in mm (WxDxH)	Description
1	07.58.10-1	990 x 610 x 1450	CNC trolley (empty) with bottom shelf
2	07.58.22	980 x 200 x 30	Top shelf for CNC trolley
3	02.910.02	942 x 263 x 134	Tool holding shelf, wide, WABg 900 2x cassette with bolted mounting brackets, 0°, 10° & 20° inclinable
4	02.910.01	942 x 147 x 134	Tool holding shelf, narrow, WABk 900 1x cassette with bolted mounting brackets, 0°, 10° & 20° inclinable



- Tool holding shelf, narrow
- WABk 900



- Tool holding shelf, wide
- WABg 900

Item no.	Dimensions in mm (WxDxH)	CNC E1	CNC E2	CNC E3
02.910.01	942 x 147 x 134	16*	11*	8*

Item no.	Dimensions in mm (WxDxH)	CNC E1	CNC E2	CNC E3
02.910.02	942 x 263 x 134	32*	22*	16*